

# \$619,475 - 38 Melrose Place, Sherwood Park

MLS® #E4444652

**\$619,475**

5 Bedroom, 3.50 Bathroom, 1,912 sqft

Single Family on 0.00 Acres

Mills Haven, Sherwood Park, AB

Welcome to this fully renovated turn key home in the heart of Mills Haven! Backing onto green space, a massive park & school, this 5 bed, 3.5 bath home offers over 2,900 total sqft of beautifully finished space. Every inch has been upgradedâ€”new roof, eaves, soffit, fascia, triple-pane windows & doors on main floor, exterior paint, added attic insulation, hot water tank. The main floor offers new flooring, added pot lights, upgraded electrical panel, and a modern kitchen with premium appliances. All bathrooms have been completely redone with stylish finishes. Enjoy A/C in the summer, and a fully finished basement for extra living space. Sitting in a quiet cul-de-sac, the landscaped backyard opens to green spaceâ€”ideal for families or anyone craving privacy and outdoor connection. A true move-in ready opportunity in one of Sherwood Parkâ€™s most established neighborhoods. Located near schools, parks and shopping this is a perfect family home.

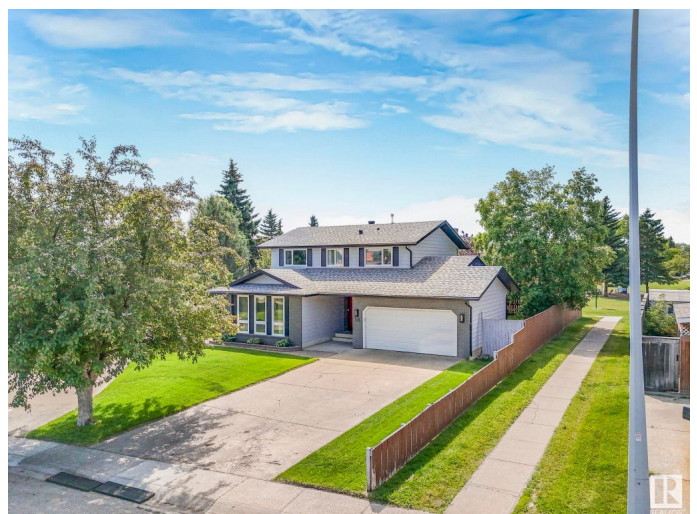
Built in 1975

## Essential Information

MLS® # E4444652

Price \$619,475

Bedrooms 5



Bathrooms	3.50
Full Baths	3
Half Baths	1
Square Footage	1,912
Acres	0.00
Year Built	1975
Type	Single Family
Sub-Type	Detached Single Family
Style	2 Storey
Status	Active

### **Community Information**

Address	38 Melrose Place
Area	Sherwood Park
Subdivision	Mills Haven
City	Sherwood Park
County	ALBERTA
Province	AB
Postal Code	T8A 3T7

### **Amenities**

Amenities	Air Conditioner, Bar, No Smoking Home, See Remarks
Parking	Double Garage Attached

### **Interior**

Interior Features	ensuite bathroom
Appliances	Air Conditioning-Central, Dishwasher-Built-In, Dryer, Garage Opener, Refrigerator, Stove-Electric, Washer, Window Coverings
Heating	Forced Air-1, Natural Gas
Fireplace	Yes
Fireplaces	See Remarks
Stories	3
Has Basement	Yes
Basement	Full, Finished

### **Exterior**

Exterior	Wood, Stone, Stucco, Vinyl
Exterior Features	Backs Onto Park/Trees, Cul-De-Sac, Fenced, Golf Nearby, Landscaped, Playground Nearby, Public Transportation, Schools, Shopping Nearby

Roof	Asphalt Shingles
Construction	Wood, Stone, Stucco, Vinyl
Foundation	Slab

**School Information**

Elementary	Madonna Elementary School
------------	---------------------------

**Additional Information**

Date Listed	June 27th, 2025
Days on Market	8
Zoning	Zone 25

DATA IS DEEMED RELIABLE BUT IS NOT GUARANTEED ACCURATE BY THE REALTORS® ASSOCIATION OF EDMONTON. COPYRIGHT 2025 BY THE REALTORS® ASSOCIATION OF EDMONTON. ALL RIGHTS RESERVED.Trademarks are owned or controlled by the Canadian Real Estate Association (CREA) and identify real estate professionals who are members of CREA (REALTOR®, REALTORS®) and/or the quality of services they provide (MLS®, Multiple Listing Service®)

Listing information last updated on July 5th, 2025 at 2:47am MDT