

\$89,000 - 6 11245 109 Avenue, Edmonton

MLS® #E4443152

\$89,000

1 Bedroom, 1.00 Bathroom, 728 sqft

Condo / Townhouse on 0.00 Acres

Queen Mary Park, Edmonton, AB

Welcome to this fantastic well managed one bedroom condo located minutes from Downtown Edmonton. This clean property features a number of recent upgrades including. Big master bedroom, living room, dining, and huge balcony and ENSUITE LAUNDRY. Minutes to all shopping, transportation, downtown, Nait and Grant MacEwan University.

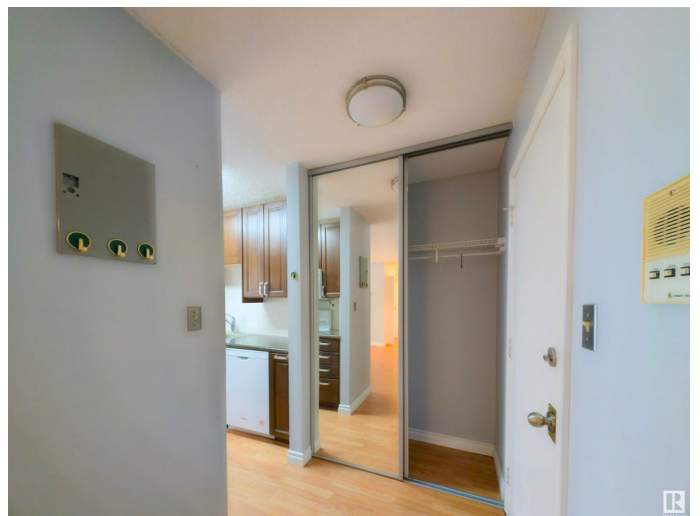
Built in 1977

Essential Information

MLS® #	E4443152
Price	\$89,000
Bedrooms	1
Bathrooms	1.00
Full Baths	1
Square Footage	728
Acres	0.00
Year Built	1977
Type	Condo / Townhouse
Sub-Type	Lowrise Apartment
Style	Single Level Apartment
Status	Active

Community Information

Address	6 11245 109 Avenue
Area	Edmonton



Subdivision	Queen Mary Park
City	Edmonton
County	ALBERTA
Province	AB
Postal Code	T5H 4B1

Amenities

Amenities	See Remarks
Parking	Stall

Interior

Appliances	Dishwasher-Built-In, Dryer, Refrigerator, Stove-Electric, Washer
Heating	Forced Air-1, Natural Gas
# of Stories	3
Stories	1
Has Basement	Yes
Basement	None, No Basement

Exterior

Exterior	Wood, Brick
Exterior Features	Landscaped, Level Land, Playground Nearby, Public Swimming Pool, Public Transportation, Schools, Treed Lot, View City, See Remarks
Roof	Asphalt Shingles
Construction	Wood, Brick
Foundation	Concrete Perimeter

Additional Information

Date Listed	June 19th, 2025
Days on Market	2
Zoning	Zone 08
Condo Fee	\$393

DATA IS DEEMED RELIABLE BUT IS NOT GUARANTEED ACCURATE BY THE REALTORS® ASSOCIATION OF EDMONTON. COPYRIGHT 2025 BY THE REALTORS® ASSOCIATION OF EDMONTON. ALL RIGHTS RESERVED. Trademarks are owned or controlled by the Canadian Real Estate Association (CREA) and identify real estate professionals who are members of CREA (REALTOR®, REALTORS®) and/or the quality of services they provide (MLS®, Multiple Listing Service®)

Listing information last updated on June 20th, 2025 at 10:47pm MDT