

\$449,900 - 169 51519 Rge Road 220, Rural Strathcona County

MLS® #E4442927

\$449,900

3 Bedroom, 2.00 Bathroom, 1,204 sqft

Rural on 2.41 Acres

Beck Estates, Rural Strathcona County, AB

Nestled in the serene community of Beck Estates, this beautifully renovated bi-level home offers over 1,200 sqft of stylish living on a private 2.41-acre lot. With 3 spacious bedrooms and 2 updated baths, it's designed for comfort and functionality. The modern kitchen boasts generous cabinetry and counter space, flowing seamlessly into the open-concept dining and living areas—perfect for entertaining. Natural light pours in through large picture windows, while the cozy wood-burning fireplace with River Stone surround adds rustic charm. The primary bedroom features a large built-in closet and a private 4-piece ensuite. Two additional bedrooms and a second 4-piece bath complete the main level. Step outside onto the expansive deck and embrace the peaceful surroundings. Noteworthy updates include new upper-floor windows, roof, hot water tank, flooring, appliances, lighting, and more. Ample space to add a garage, shop, or outbuilding tailored to your needs. A true country oasis.

Built in 1991

Essential Information

MLS® #

E4442927



Price	\$449,900
Bedrooms	3
Bathrooms	2.00
Full Baths	2
Square Footage	1,204
Acres	2.41
Year Built	1991
Type	Rural
Sub-Type	Detached Single Family
Style	Bi-Level
Status	Active

Community Information

Address	169 51519 Rge Road 220
Area	Rural Strathcona County
Subdivision	Beck Estates
City	Rural Strathcona County
County	ALBERTA
Province	AB
Postal Code	T8E 1H1

Amenities

Features	Deck, No Smoking Home, R.V. Storage, Vinyl Windows
----------	--

Interior

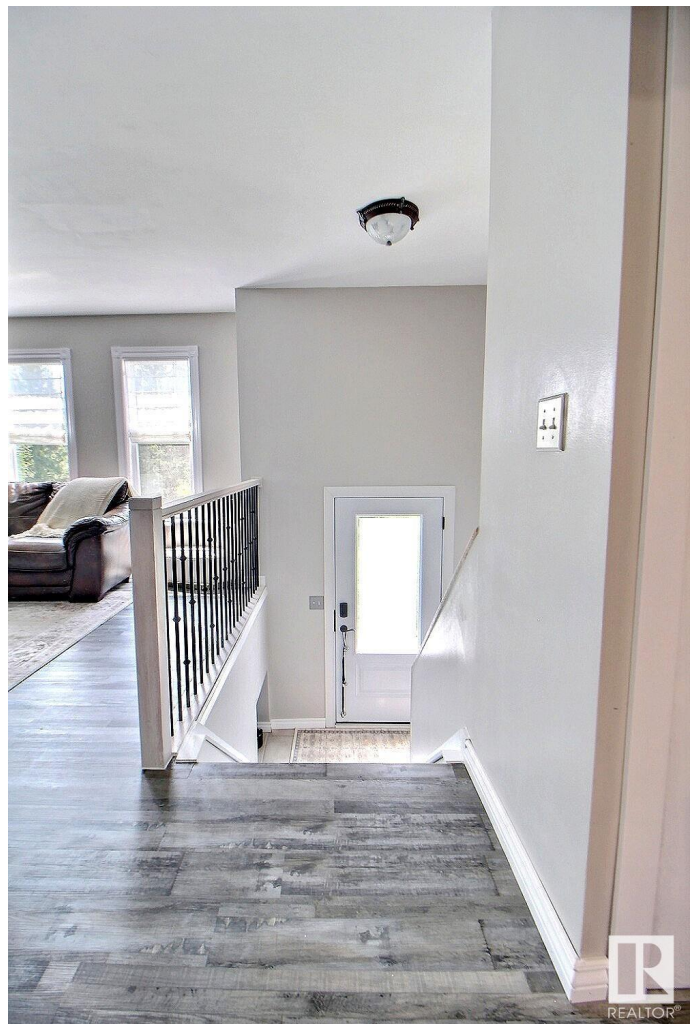
Interior Features	ensuite bathroom
Heating	Forced Air-1, Natural Gas
Fireplace	Yes
Stories	1
Has Basement	Yes
Basement	Full, Unfinished

Exterior

Exterior	Wood
Exterior Features	Landscaped, Private Setting
Construction	Wood
Foundation	Concrete Perimeter

Additional Information

Date Listed	June 18th, 2025
Days on Market	5
Zoning	Zone 80



DATA IS DEEMED RELIABLE BUT IS NOT GUARANTEED ACCURATE BY THE REALTORS® ASSOCIATION OF EDMONTON. COPYRIGHT 2025 BY THE REALTORS® ASSOCIATION OF EDMONTON. ALL RIGHTS RESERVED. Trademarks are owned or controlled by the Canadian Real Estate Association (CREA) and identify real estate professionals who are members of CREA (REALTOR®, REALTORS®) and/or the quality of services they provide (MLS®, Multiple Listing Service®)

Listing information last updated on June 23rd, 2025 at 4:18pm MDT