

## \$650,472 - 1604 11 Avenue, Edmonton

MLS® #E4442203

**\$650,472**

4 Bedroom, 3.00 Bathroom, 2,002 sqft

Single Family on 0.00 Acres

Aster, Edmonton, AB

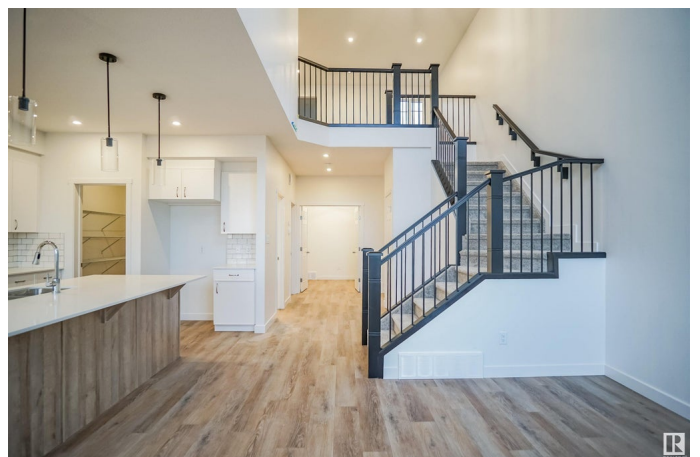
Welcome to the "Chelsea" built by the award-winning builder Pacesetter homes located in the heart of the Aster and just backing the natural reserve. As you enter the home you are greeted by luxury vinyl plank flooring throughout the great room ( with open to above ceilings ) , kitchen, and the breakfast nook. Your large kitchen features tile back splash, an island a flush eating bar, quartz counter tops and an undermount sink. Just off of the kitchen and tucked away by the front entry is a main floor bedroom and a 3 piece powder room. Upstairs is the primary bedrooms retreat with a large walk in closet and a 5-piece en-suite. The second level also include 2 additional bedrooms with a conveniently placed main 4-piece bathroom and a good sized central bonus room. Close to all amenities and easy access to the Henday and the white mud trail. \*\*\* This home is under construction and the photos used are from a previous similar home, the colors and finishings may vary , complete by September \*\*\*

Built in 2025

### Essential Information

MLS® # E4442203

Price \$650,472



Bedrooms	4
Bathrooms	3.00
Full Baths	3
Square Footage	2,002
Acres	0.00
Year Built	2025
Type	Single Family
Sub-Type	Detached Single Family
Style	2 Storey
Status	Active

### **Community Information**

Address	1604 11 Avenue
Area	Edmonton
Subdivision	Aster
City	Edmonton
County	ALBERTA
Province	AB
Postal Code	T6W 4X8

### **Amenities**

Amenities	See Remarks
Parking	Double Garage Attached

### **Interior**

Interior Features	ensuite bathroom
Appliances	Garage Control, Garage Opener, See Remarks
Heating	Forced Air-1, Natural Gas
Stories	2
Has Basement	Yes
Basement	Full, Unfinished

### **Exterior**

Exterior	Wood, Stone, Vinyl
Exterior Features	Airport Nearby, Backs Onto Park/Trees, Golf Nearby, Park/Reserve, Playground Nearby, Public Swimming Pool, Public Transportation, Schools, Shopping Nearby, See Remarks
Roof	Asphalt Shingles
Construction	Wood, Stone, Vinyl

Foundation                      Concrete Perimeter

**Additional Information**

Date Listed                      June 12th, 2025  
Days on Market                27  
Zoning                              Zone 30

DATA IS DEEMED RELIABLE BUT IS NOT GUARANTEED ACCURATE BY THE REALTORS® ASSOCIATION OF EDMONTON. COPYRIGHT 2025 BY THE REALTORS® ASSOCIATION OF EDMONTON. ALL RIGHTS RESERVED.Trademarks are owned or controlled by the Canadian Real Estate Association (CREA) and identify real estate professionals who are members of CREA (REALTOR®, REALTORS®) and/or the quality of services they provide (MLS®, Multiple Listing Service®)  
Listing information last updated on July 9th, 2025 at 2:02pm MDT