

\$234,900 - 114 905 Blacklock Way, Edmonton

MLS® #E4441002

\$234,900

2 Bedroom, 2.00 Bathroom, 981 sqft

Condo / Townhouse on 0.00 Acres

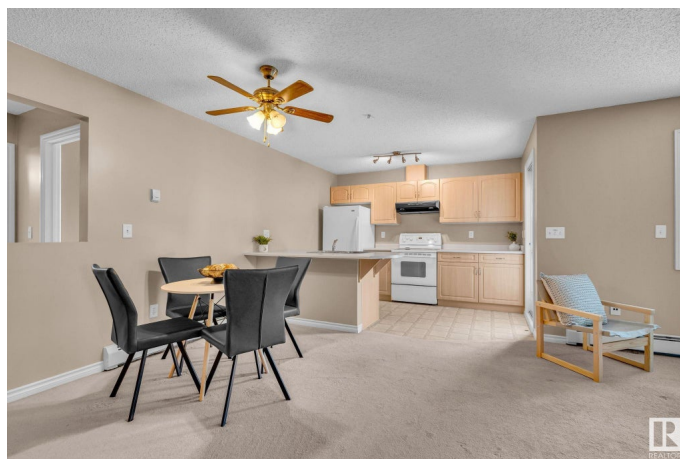
Blackburne, Edmonton, AB

Welcome to your private main-floor oasis! This beautifully maintained two-bedroom, two-bathroom condo backs onto peaceful green spaceâ€”offering the perfect blend of nature and convenience. Step outside and explore nearby walking trails, or simply enjoy the view from your patio with no rear neighbors. Inside, the open-concept layout is both functional and inviting, with spacious bedrooms, a modern kitchen, and plenty of natural light. Tucked away in a quiet, serene setting, yet just minutes from shopping, transit, and all major commuter routes, this location truly offers the best of both worlds. Whether you're a first-time buyer, downsizer, or investor, this is a must-see!

Built in 2003

Essential Information

MLS® #	E4441002
Price	\$234,900
Bedrooms	2
Bathrooms	2.00
Full Baths	2
Square Footage	981
Acres	0.00
Year Built	2003
Type	Condo / Townhouse



Sub-Type	Lowrise Apartment
Style	Single Level Apartment
Status	Active

Community Information

Address	114 905 Blacklock Way
Area	Edmonton
Subdivision	Blackburne
City	Edmonton
County	ALBERTA
Province	AB
Postal Code	T6W 1M7

Amenities

Amenities	Sprinkler System-Fire, Storage Cage
Parking Spaces	1
Parking	Underground

Interior

Interior Features	ensuite bathroom
Appliances	Dishwasher-Built-In, Dryer, Garburator, Hood Fan, Refrigerator, Stove-Electric, Washer, Window Coverings
Heating	Hot Water, Natural Gas
Fireplace	Yes
Fireplaces	Corner
# of Stories	4
Stories	1
Has Basement	Yes
Basement	None, No Basement

Exterior

Exterior	Wood, Vinyl
Exterior Features	Airport Nearby, Private Setting, Shopping Nearby
Roof	Asphalt Shingles
Construction	Wood, Vinyl
Foundation	Concrete Perimeter

Additional Information

Date Listed	June 6th, 2025
-------------	----------------

Days on Market	33
Zoning	Zone 55
Condo Fee	\$528

DATA IS DEEMED RELIABLE BUT IS NOT GUARANTEED ACCURATE BY THE REALTORS® ASSOCIATION OF EDMONTON. COPYRIGHT 2025 BY THE REALTORS® ASSOCIATION OF EDMONTON. ALL RIGHTS RESERVED. Trademarks are owned or controlled by the Canadian Real Estate Association (CREA) and identify real estate professionals who are members of CREA (REALTOR®, REALTORS®) and/or the quality of services they provide (MLS®, Multiple Listing Service®)

Listing information last updated on July 9th, 2025 at 2:02pm MDT