

## \$479,900 - 2006 Garnett Way, Edmonton

MLS® #E4437307

**\$479,900**

5 Bedroom, 2.00 Bathroom, 1,057 sqft

Single Family on 0.00 Acres

Glastonbury, Edmonton, AB

Discover your dream home in Glastonbury at an affordable price point! This fully renovated 5-bed, 2-bath bi-level, spanning 2,008 sqft, is move-in ready with many recent modern upgrades. Enjoy luxury vinyl plank flooring, new carpet, fresh paint, updated lighting, and new vanities in both 4-pc bathrooms. The updated kitchen, featuring stainless steel appliances, flows into a bright living area with patio doors to a new deck overlooking the fully fenced backyard perfect for family gatherings. The main floor offers 3 spacious bedrooms and a 4-pc bath, while the lower level includes a large family room, 2 additional bedrooms, another 4-pc bath, a laundry room, and utility storage. The double attached garage adds convenience, and the family-friendly neighborhood provides easy access to Whitemud, Anthony Henday, Costco, playgrounds, and a splash park. Ideal for first-time buyers or growing families, this beautifully updated gem in a quiet, sought-after community won't last long.

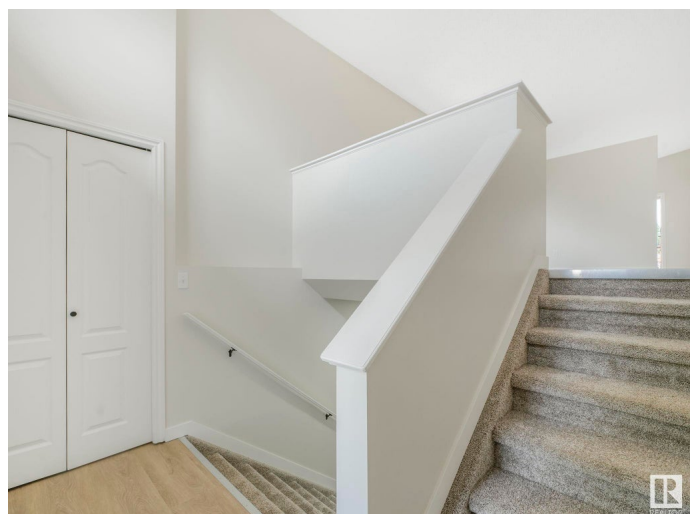
Built in 2003

### Essential Information

MLS® # E4437307

Price \$479,900

Bedrooms 5



Bathrooms	2.00
Full Baths	2
Square Footage	1,057
Acres	0.00
Year Built	2003
Type	Single Family
Sub-Type	Detached Single Family
Style	Bi-Level
Status	Active

### Community Information

Address	2006 Garnett Way
Area	Edmonton
Subdivision	Glastonbury
City	Edmonton
County	ALBERTA
Province	AB
Postal Code	T5T 6T5

### Amenities

Amenities	Off Street Parking, On Street Parking, Deck, Detectors Smoke, Hot Water Natural Gas, No Animal Home, No Smoking Home, Smart/Program. Thermostat, Vaulted Ceiling, Vinyl Windows, See Remarks
Parking Spaces	4
Parking	Double Garage Attached

### Interior

Appliances	Dishwasher-Built-In, Dryer, Garage Control, Garage Opener, Hood Fan, Refrigerator, Stove-Electric, Washer
Heating	Forced Air-1, Natural Gas
Stories	2
Has Basement	Yes
Basement	Full, Finished

### Exterior

Exterior	Wood, Vinyl
Exterior Features	Fenced, Golf Nearby, Landscaped, No Back Lane, Playground Nearby, Public Swimming Pool, Public Transportation, Schools, Shopping Nearby, See Remarks

Roof	Asphalt Shingles
Construction	Wood, Vinyl
Foundation	Concrete Perimeter

**School Information**

Elementary	Kim Hung School
Middle	Kim Hung School

**Additional Information**

Date Listed	May 19th, 2025
Days on Market	31
Zoning	Zone 58
HOA Fees	126
HOA Fees Freq.	Annually

DATA IS DEEMED RELIABLE BUT IS NOT GUARANTEED ACCURATE BY THE REALTORS® ASSOCIATION OF EDMONTON. COPYRIGHT 2025 BY THE REALTORS® ASSOCIATION OF EDMONTON. ALL RIGHTS RESERVED.Trademarks are owned or controlled by the Canadian Real Estate Association (CREA) and identify real estate professionals who are members of CREA (REALTOR®, REALTORS®) and/or the quality of services they provide (MLS®, Multiple Listing Service®)

Listing information last updated on June 19th, 2025 at 12:03pm MDT