

## **\$162,000 - 10 14320 80 Street, Edmonton**

MLS® #E4436562

**\$162,000**

3 Bedroom, 1.00 Bathroom, 866 sqft

Condo / Townhouse on 0.00 Acres

Kildare, Edmonton, AB

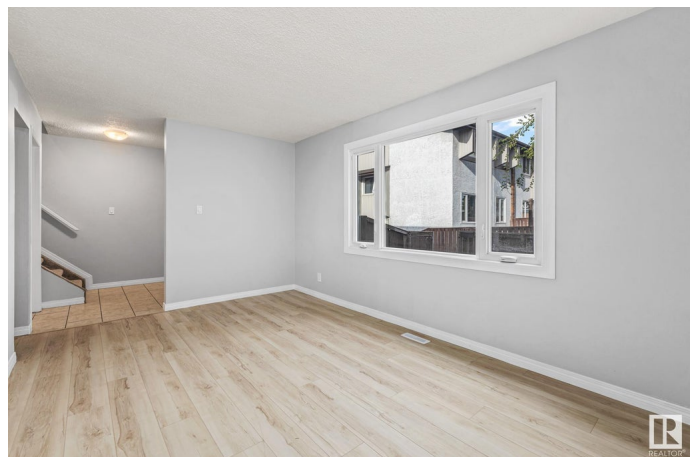
Welcome to this charming 3-bedroom Fully Finished Basement Townhome with BRAND NEW gorgeous laminate and carpet PLUS complete NEW PAINT throughout INCLUDING trim and doors! RARE large west facing yard perfect for your pup & an evening BBQ! The home features a spacious layout with a comfortable living & dining areas, perfect for everyday living or entertaining. This updated kitchen offers plenty of space with a galley style layout and rich espresso cabinetry. Upstairs you'll discover a stylish Renovated full bath, & a total of 3 bedrooms. The primary bedroom is spacious & offers a large closet. The FULLY FINISHED basement offers an open living space with a tv area, recreational space & room for a gym area PLUS LAUNDRY and storage area. Newer HWT! Updated windows and so much more!! This home provides all the essentials for comfortable living. Enjoy the outdoors in your own fenced-in yard. One Assigned parking stall also included. WALKING distance to schools and close to other amenities!!

Built in 1971

### **Essential Information**

MLS® # E4436562

Price \$162,000



Bedrooms	3
Bathrooms	1.00
Full Baths	1
Square Footage	866
Acres	0.00
Year Built	1971
Type	Condo / Townhouse
Sub-Type	Townhouse
Style	2 Storey
Status	Active

### Community Information

Address	10 14320 80 Street
Area	Edmonton
Subdivision	Kildare
City	Edmonton
County	ALBERTA
Province	AB
Postal Code	T5C 1L6

### Amenities

Amenities	On Street Parking, Detectors Smoke, No Smoking Home, Parking-Plug-Ins, Storage-In-Suite, Vinyl Windows
Parking Spaces	1
Parking	Stall

### Interior

Appliances	Dryer, Hood Fan, Refrigerator, Stove-Electric, Washer, See Remarks
Heating	Forced Air-1, Natural Gas
Stories	3
Has Basement	Yes
Basement	Full, Finished

### Exterior

Exterior	Wood, Stucco
Exterior Features	Fenced, Flat Site, Landscaped, Park/Reserve, Playground Nearby, Public Transportation, Schools, Shopping Nearby
Roof	Asphalt Shingles
Construction	Wood, Stucco

Foundation                Concrete Perimeter

**School Information**

Elementary                Kildare School/Father Leo  
Middle                      Londonderry School  
High                        M.E. LaZerte School

**Additional Information**

Date Listed                May 15th, 2025  
Days on Market        10  
Zoning                      Zone 02  
Condo Fee                \$373

DATA IS DEEMED RELIABLE BUT IS NOT GUARANTEED ACCURATE BY THE REALTORS® ASSOCIATION OF EDMONTON. COPYRIGHT 2025 BY THE REALTORS® ASSOCIATION OF EDMONTON. ALL RIGHTS RESERVED.Trademarks are owned or controlled by the Canadian Real Estate Association (CREA) and identify real estate professionals who are members of CREA (REALTOR®, REALTORS®) and/or the quality of services they provide (MLS®, Multiple Listing Service®)  
Listing information last updated on May 25th, 2025 at 5:32pm MDT