

\$529,900 - 27 Deer Park Boulevard, Spruce Grove

MLS® #E4436292

\$529,900

4 Bedroom, 3.50 Bathroom, 1,585 sqft
Single Family on 0.00 Acres

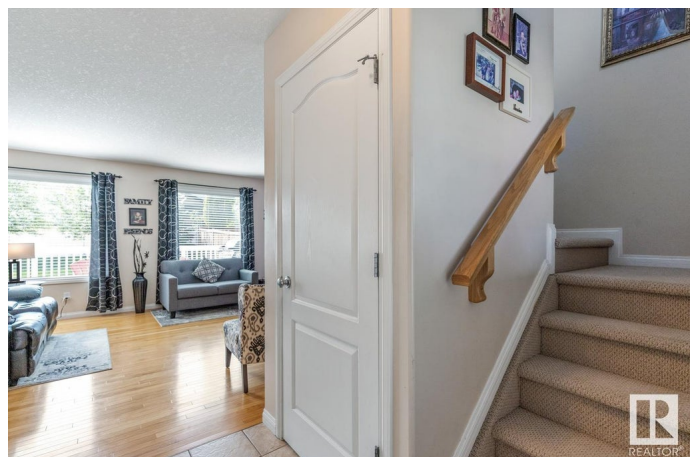
Deer Park_SPGR, Spruce Grove, AB

Welcome home to the family friendly community of Deer Park! This IMMACUATELY maintained air conditioned home has everything that is required in the growing family. From the over sized 24x24 garage to the larger apron to allow the camper to be loaded for weekends away. When you enter the welcoming & open main floor plan greets you with warmth & light. You would be hard pressed to find a better maintained home. All the big items have been addressed - this home exudes pride of ownership. The main floor welcomes the family gatherings with the open kitchen, dining & living area. Upstairs you will find a large primary suite with 4 piece ensuite & two additional bedrooms. The basement is ready for the teenagers with a large family area, additional bedroom & three piece bath. The back yard is south facing with a nice sized deck & fully fenced for the dogs. Many a memory has been made in this home & now its simply waiting for you to make new ones. Close to shopping golf & easy access to both hwy 16 & yellowhead.

Built in 2003

Essential Information

MLS® #	E4436292
Price	\$529,900



Bedrooms	4
Bathrooms	3.50
Full Baths	3
Half Baths	1
Square Footage	1,585
Acres	0.00
Year Built	2003
Type	Single Family
Sub-Type	Detached Single Family
Style	2 Storey
Status	Active

Community Information

Address	27 Deer Park Boulevard
Area	Spruce Grove
Subdivision	Deer Park_SPGR
City	Spruce Grove
County	ALBERTA
Province	AB
Postal Code	T7X 4M2

Amenities

Amenities	Deck, No Animal Home, No Smoking Home, See Remarks
Parking	Double Garage Attached, RV Parking

Interior

Interior Features	ensuite bathroom
Appliances	Air Conditioning-Central, Dishwasher-Built-In, Dryer, Garage Control, Garage Opener, Hood Fan, Refrigerator, Stove-Electric, Washer
Heating	Forced Air-1, Natural Gas
Stories	3
Has Basement	Yes
Basement	Full, Finished

Exterior

Exterior	Wood, Vinyl
Exterior Features	Golf Nearby, Landscaped, No Back Lane, Playground Nearby, Public Swimming Pool, Public Transportation, Schools, Shopping Nearby, See Remarks

Roof	Asphalt Shingles
Construction	Wood, Vinyl
Foundation	Concrete Perimeter

Additional Information

Date Listed	May 14th, 2025
Days on Market	66
Zoning	Zone 91

DATA IS DEEMED RELIABLE BUT IS NOT GUARANTEED ACCURATE BY THE REALTORS® ASSOCIATION OF EDMONTON. COPYRIGHT 2025 BY THE REALTORS® ASSOCIATION OF EDMONTON. ALL RIGHTS RESERVED.Trademarks are owned or controlled by the Canadian Real Estate Association (CREA) and identify real estate professionals who are members of CREA (REALTOR®, REALTORS®) and/or the quality of services they provide (MLS®, Multiple Listing Service®)

Listing information last updated on July 18th, 2025 at 11:47pm MDT