

\$249,000 - 507 11080 Ellerslie Road, Edmonton

MLS® #E4435869

\$249,000

1 Bedroom, 1.00 Bathroom, 651 sqft

Condo / Townhouse on 0.00 Acres

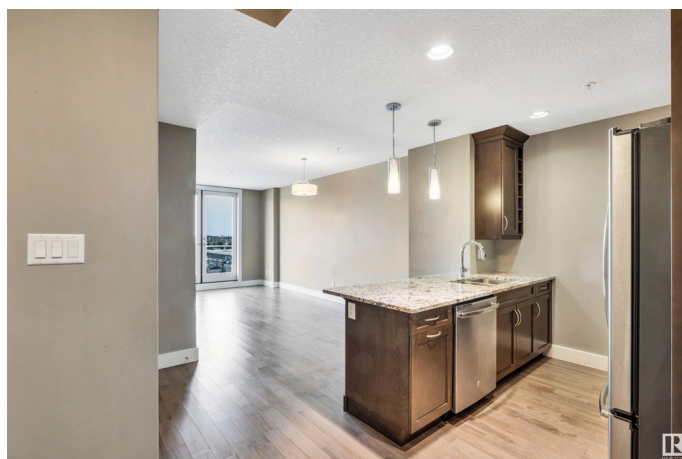
Richford, Edmonton, AB

Welcome to this stunning west-facing 1-bedroom, 1-bathroom luxury concrete condo, loaded with upgrades and move-in ready! Featuring stainless steel appliances, a mosaic tile backsplash, elegant granite countertops, engineered hardwood flooring, built-in roll-out pantry drawers, built-in cabinet garbage bin, full-height bathroom tile, wall-mounted vanity, and premium Hunter Douglas up/down and room-darkening blinds. Custom closet organizers add even more convenience. The building offers top-notch amenities, including two rooftop patios, a spacious conference room, fitness centre, lounge with billiards and social area, and a guest suite for visitors. Access to public transportation, shopping, schools, and major routes—just minutes from Anthony Henday Drive, Highway 2, and South Edmonton Common.

Built in 2014

Essential Information

MLS® #	E4435869
Price	\$249,000
Bedrooms	1
Bathrooms	1.00
Full Baths	1
Square Footage	651



Acres	0.00
Year Built	2014
Type	Condo / Townhouse
Sub-Type	Lowrise Apartment
Style	Single Level Apartment
Status	Active

Community Information

Address	507 11080 Ellerslie Road
Area	Edmonton
Subdivision	Richford
City	Edmonton
County	ALBERTA
Province	AB
Postal Code	T6W 2C2

Amenities

Amenities	Ceiling 9 ft., Closet Organizers, Exercise Room, Intercom, No Animal Home, No Smoking Home, Parking-Visitor, Party Room, Recreation Room/Centre, Secured Parking, Social Rooms
Parking	Underground

Interior

Appliances	Dishwasher-Built-In, Dryer, Garage Opener, Microwave Hood Fan, Refrigerator, Stove-Electric, Washer
Heating	Fan Coil, Natural Gas
# of Stories	6
Stories	1
Has Basement	Yes
Basement	None, No Basement

Exterior

Exterior	Concrete, Metal, Stucco
Exterior Features	Airport Nearby, Commercial, Fenced, Golf Nearby, Landscaped, Playground Nearby, Schools
Roof	Flat
Construction	Concrete, Metal, Stucco
Foundation	Concrete Perimeter

Additional Information

Date Listed	May 11th, 2025
Days on Market	67
Zoning	Zone 55
Condo Fee	\$440

DATA IS DEEMED RELIABLE BUT IS NOT GUARANTEED ACCURATE BY THE REALTORS® ASSOCIATION OF EDMONTON. COPYRIGHT 2025 BY THE REALTORS® ASSOCIATION OF EDMONTON. ALL RIGHTS RESERVED. Trademarks are owned or controlled by the Canadian Real Estate Association (CREA) and identify real estate professionals who are members of CREA (REALTOR®, REALTORS®) and/or the quality of services they provide (MLS®, Multiple Listing Service®)

Listing information last updated on July 17th, 2025 at 6:47am MDT