

\$188,700 - 135 3425 19 Street, Edmonton

MLS® #E4434681

\$188,700

2 Bedroom, 2.00 Bathroom, 837 sqft

Condo / Townhouse on 0.00 Acres

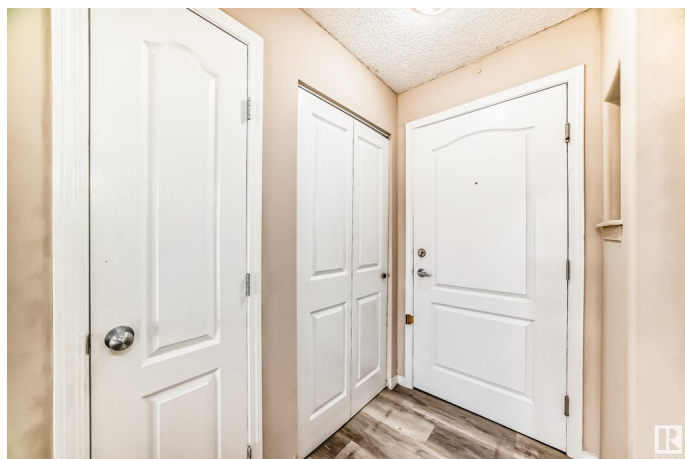
Wild Rose, Edmonton, AB

Perfect Location!!! This beautifully maintained main floor unit in the desirable Wild Rose community offers 835 square feet of comfortable living space. Featuring 2 spacious bedrooms, 2 full bathrooms, a terrific kitchen, and a large living room, this home is designed for both function and comfort. Enjoy the convenience of in-suite laundry and your very own covered, energized, titled parking stall (carport). Step outside to a private ground-floor patio with sunny south exposure. Building Amenities, Guest Suite for overnight visitors, Social Room for gatherings and events. Easy access to Anthony Henday Drive . Just minutes from freeways, shopping, schools, parks, and more!

Built in 2005

Essential Information

MLS® #	E4434681
Price	\$188,700
Bedrooms	2
Bathrooms	2.00
Full Baths	2
Square Footage	837
Acres	0.00
Year Built	2005
Type	Condo / Townhouse



Sub-Type	Lowrise Apartment
Style	Single Level Apartment
Status	Active

Community Information

Address	135 3425 19 Street
Area	Edmonton
Subdivision	Wild Rose
City	Edmonton
County	ALBERTA
Province	AB
Postal Code	T6T 2B5

Amenities

Amenities	Detectors Smoke, Patio
Parking	Single Carport

Interior

Interior Features	ensuite bathroom
Appliances	Dishwasher-Built-In, Dryer, Refrigerator, Stove-Electric, Washer
Heating	Baseboard, Natural Gas
# of Stories	1
Stories	1
Has Basement	Yes
Basement	None, No Basement

Exterior

Exterior	Wood, Brick, Vinyl
Exterior Features	Golf Nearby, Landscaped, Playground Nearby, Public Swimming Pool, Public Transportation, Schools, Shopping Nearby
Roof	Asphalt Shingles
Construction	Wood, Brick, Vinyl
Foundation	Concrete Perimeter

Additional Information

Date Listed	May 6th, 2025
Days on Market	17
Zoning	Zone 30
Condo Fee	\$460

DATA IS DEEMED RELIABLE BUT IS NOT GUARANTEED ACCURATE BY THE REALTORS® ASSOCIATION OF EDMONTON. COPYRIGHT 2025 BY THE REALTORS® ASSOCIATION OF EDMONTON. ALL RIGHTS RESERVED. Trademarks are owned or controlled by the Canadian Real Estate Association (CREA) and identify real estate professionals who are members of CREA (REALTOR®, REALTORS®) and/or the quality of services they provide (MLS®, Multiple Listing Service®)

Listing information last updated on May 23rd, 2025 at 1:02am MDT