

\$224,900 - 101 9921 104 Street, Edmonton

MLS® #E4423013

\$224,900

2 Bedroom, 1.50 Bathroom, 1,417 sqft
Condo / Townhouse on 0.00 Acres

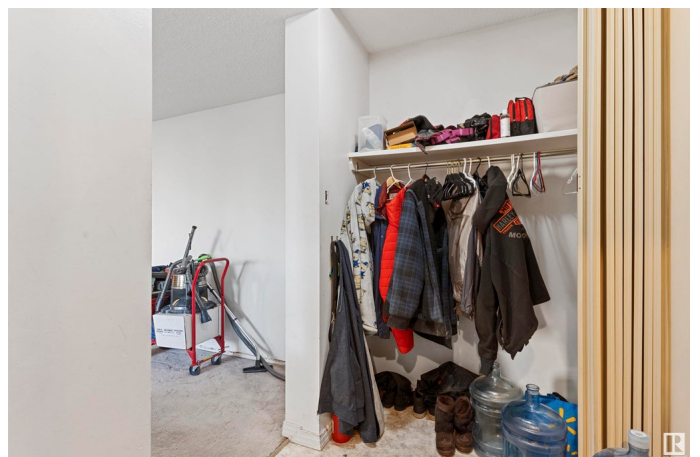
Downtown (Edmonton), Edmonton, AB

Welcome to this spacious two-bedroom, one-and-a-half-bathroom condo in the heart of downtown Edmonton! This first-floor unit is 1417 square feet with abundant natural light streaming in through large windows. Both bedrooms are generously sized, with the primary bedroom featuring a private en suite for added convenience. Enjoy the amazing amenities this building offers, including a gym and a social room, perfect for meeting neighbors and staying active. Location is everything, and this condo has it all—just a block away from the LRT, providing easy access to the entire city. Plus, you're only moments from the beautiful River Valley and a variety of downtown attractions, shopping, and dining. Experience the best of city living in this ideally located, bright, and spacious condo!

Built in 1977

Essential Information

MLS® #	E4423013
Price	\$224,900
Bedrooms	2
Bathrooms	1.50
Full Baths	1
Half Baths	1
Square Footage	1,417
Acres	0.00



Year Built	1977
Type	Condo / Townhouse
Sub-Type	Apartment High Rise
Style	Single Level Apartment
Status	Active

Community Information

Address	101 9921 104 Street
Area	Edmonton
Subdivision	Downtown (Edmonton)
City	Edmonton
County	ALBERTA
Province	AB
Postal Code	T5K 2K3

Amenities

Amenities	Detectors Smoke, Exercise Room, Parking-Visitor, Party Room, Recreation Room/Centre, Secured Parking, Security Door, Social Rooms, Storage-In-Suite
Parking	Parkade, Underground

Interior

Interior Features	ensuite bathroom
Appliances	Dishwasher-Built-In, Dryer, Microwave Hood Fan, Refrigerator, Stove-Electric, Washer, Window Coverings
Heating	Hot Water, Natural Gas
# of Stories	15
Stories	1
Has Basement	Yes
Basement	None, No Basement

Exterior

Exterior	Concrete
Exterior Features	Paved Lane, Public Transportation, Schools, Shopping Nearby, Ski Hill Nearby, View City
Roof	Tar & Gravel
Construction	Concrete
Foundation	Concrete Perimeter

School Information

Elementary	GARNEAU SCHOOL
Middle	ALLENDALE SCHOOL
High	VICTORIA SCHOOL

Additional Information

Date Listed	February 26th, 2025
Days on Market	77
Zoning	Zone 12
Condo Fee	\$1,048

DATA IS DEEMED RELIABLE BUT IS NOT GUARANTEED ACCURATE BY THE REALTORS® ASSOCIATION OF EDMONTON. COPYRIGHT 2025 BY THE REALTORS® ASSOCIATION OF EDMONTON. ALL RIGHTS RESERVED. Trademarks are owned or controlled by the Canadian Real Estate Association (CREA) and identify real estate professionals who are members of CREA (REALTOR®, REALTORS®) and/or the quality of services they provide (MLS®, Multiple Listing Service®)

Listing information last updated on May 14th, 2025 at 6:47pm MDT