

Courtesy Of Wassim Moustapha and Max Segal Of Sweetly

\$1,890,000 - 8356 120 Street, Edmonton

MLS® #E4419922

\$1,890,000

4 Bedroom, 3.50 Bathroom, 2,713 sqft

Single Family on 0.00 Acres

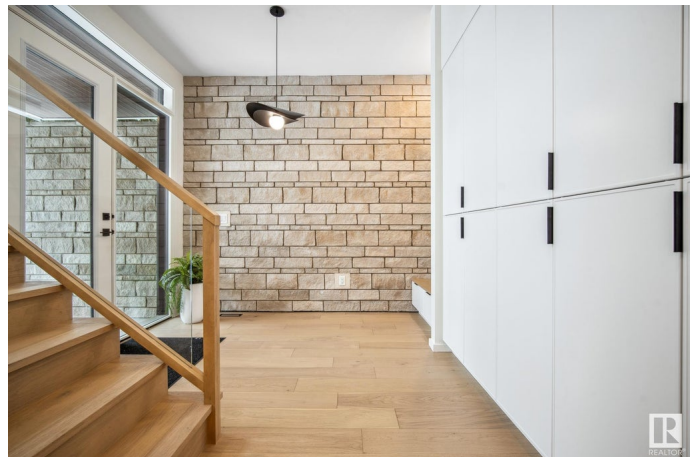
Windsor Park (Edmonton), Edmonton, AB

Welcome to luxury living in Windsor Park, one of Edmonton's most prestigious neighborhoods. This stunning 2,712 sq. ft. custom-built infill showcases exceptional craftsmanship and high-end finishes throughout. Step inside to discover hardwood floors flowing through the main and upper levels, creating warmth and elegance. The gourmet kitchen is a chef's dream, featuring quartz countertops, Fisher & Paykel appliances, and a paneled fridge for a seamless, modern look. The primary suite is a private retreat, offering in-floor heating, a spa-inspired ensuite and a spacious walk-in closet. Enjoy year-round comfort with central air conditioning and a Navien tankless hot water system. The heated triple-car garage and private home gym add to the convenience and luxury. Perfectly located near the River Valley, U of A, and downtown, this home is a rare gem.

Built in 2024

Essential Information

MLS® #	E4419922
Price	\$1,890,000
Bedrooms	4
Bathrooms	3.50
Full Baths	3



Half Baths	1
Square Footage	2,713
Acres	0.00
Year Built	2024
Type	Single Family
Sub-Type	Detached Single Family
Style	2 Storey
Status	Active

Community Information

Address	8356 120 Street
Area	Edmonton
Subdivision	Windsor Park (Edmonton)
City	Edmonton
County	ALBERTA
Province	AB
Postal Code	T6G 1X2

Amenities

Amenities	Deck, See Remarks
Parking Spaces	6
Parking	Triple Garage Detached

Interior

Interior Features	ensuite bathroom
Appliances	Dishwasher-Built-In, Dryer, Oven-Microwave, Refrigerator, Stove-Electric, Washer
Heating	Forced Air-1, Natural Gas
Fireplace	Yes
Fireplaces	Glass Door
Stories	3
Has Basement	Yes
Basement	Full, Finished

Exterior

Exterior	Wood, Stone, Stucco
Exterior Features	Golf Nearby, No Back Lane, Not Fenced, Park/Reserve, Playground Nearby, Public Swimming Pool, Public Transportation, Schools, Shopping Nearby

Roof	Asphalt Shingles
Construction	Wood, Stone, Stucco
Foundation	Concrete Perimeter

School Information

Elementary	Windsor Park School
Middle	McKernan School

Additional Information

Date Listed	January 31st, 2025
Days on Market	41
Zoning	Zone 15

DATA IS DEEMED RELIABLE BUT IS NOT GUARANTEED ACCURATE BY THE REALTORS® ASSOCIATION OF EDMONTON. COPYRIGHT 2025 BY THE REALTORS® ASSOCIATION OF EDMONTON. ALL RIGHTS RESERVED. Trademarks are owned or controlled by the Canadian Real Estate Association (CREA) and identify real estate professionals who are members of CREA (REALTOR®, REALTORS®) and/or the quality of services they provide (MLS®, Multiple Listing Service®)

Listing information last updated on March 13th, 2025 at 4:17am MDT