

\$184,000 - 10 2115 118 Street, Edmonton

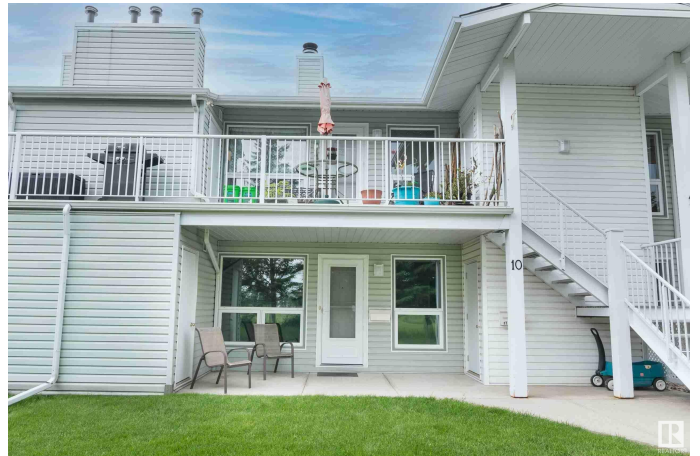
MLS® #E4419088

\$184,000

2 Bedroom, 1.00 Bathroom, 930 sqft
Condo / Townhouse on 0.00 Acres

Skyrattler, Edmonton, AB

This property in the unique and outstanding complex of Whispering Pine is located in a super quiet location facing the park where you can really enjoy the treed area and walking trails of Blackmud Creek Ravine. This two bedrooms (one could be a den) home has many upgrades. The spacious living & dining room, excellent kitchen and a tiled wood burning fireplace area. You have your own furnace & hot water tank plus a large storage room. This complex has also had several exterior upgrades which include vinyl windows & asphalt shingles. It is pet friendly & an ideal for first time buyers, students or retirees. Excellent bus service on 23rd Ave to Century Park LRT connecting to the U of A & downtown, quick access to shopping, YMCA, Whitemud & Anthony Henday Dr. What a fantastic place to call home!



Built in 1982

Essential Information

MLS® #	E4419088
Price	\$184,000
Bedrooms	2
Bathrooms	1.00
Full Baths	1
Square Footage	930
Acres	0.00

Year Built	1982
Type	Condo / Townhouse
Sub-Type	Carriage
Style	Bungalow
Status	Active

Community Information

Address	10 2115 118 Street
Area	Edmonton
Subdivision	Skyrattler
City	Edmonton
County	ALBERTA
Province	AB
Postal Code	T6J 6L8

Amenities

Amenities	Parking-Plug-Ins, Parking-Visitor
Parking	Stall

Interior

Appliances	Dishwasher-Built-In, Dryer, Refrigerator, Stove-Electric, Washer
Heating	Forced Air-1, Natural Gas
Stories	1
Has Basement	Yes
Basement	None, No Basement

Exterior

Exterior	Wood
Exterior Features	Cul-De-Sac, Park/Reserve, Playground Nearby, Private Setting, Ravine View
Roof	Asphalt Shingles
Construction	Wood
Foundation	Concrete Perimeter

Additional Information

Date Listed	January 24th, 2025
Days on Market	48
Zoning	Zone 16
Condo Fee	\$323

DATA IS DEEMED RELIABLE BUT IS NOT GUARANTEED ACCURATE BY THE REALTORS® ASSOCIATION OF EDMONTON. COPYRIGHT 2025 BY THE REALTORS® ASSOCIATION OF EDMONTON. ALL RIGHTS RESERVED. Trademarks are owned or controlled by the Canadian Real Estate Association (CREA) and identify real estate professionals who are members of CREA (REALTOR®, REALTORS®) and/or the quality of services they provide (MLS®, Multiple Listing Service®)

Listing information last updated on March 13th, 2025 at 5:32pm MDT